

**ELECTRO
ARC**

METAL DISINTEGRATORS



**REMOVE
BROKEN TAPS
BOLTS & DRILLS
IN MINUTES**

PERFORMANCE

BROKEN TOOLING ONE INCH DEEP	REMOVAL TIME
0-80 TO 10-32	UNDER 1 min.
1/4"	1 - 2 min.
5/16"	1.5 - 2.5 min.
3/8"	1.5 - 2 min.
1/2"	2 - 4 min.
5/8"	1.5 - 2.5 min.
3/4"	2.5 - 3.5 min.

MODEL 2-S

Portable disintegrator can be used
with a variety of setup configurations

For HSS tooling removal

Compact **ARC•ER** Head with built-in "Intuitive" LED
Power Indicator makes control of the process easy

Removes taps from #2 (2 mm) up to 1-1/4"
(32 mm) in one pass

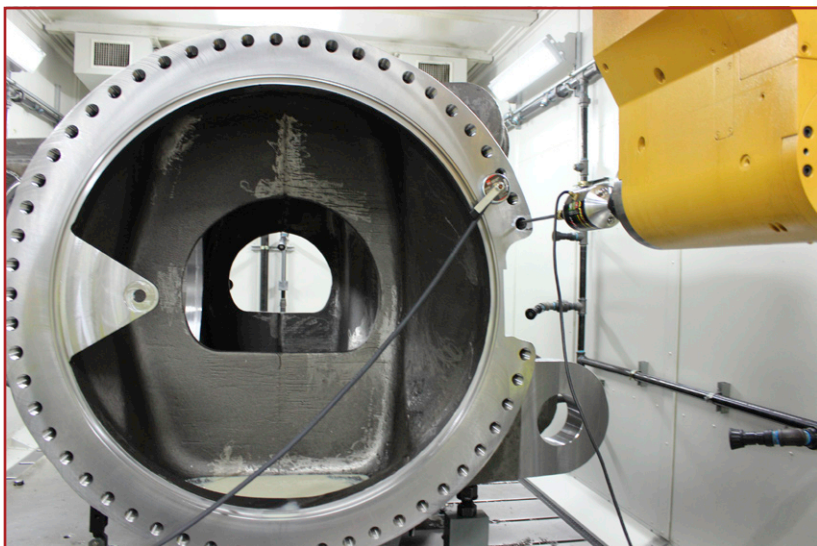
Optional power supplies for larger diameters

Convenient tool storage drawer with six collet holders
and space for electrodes



Made in USA

ARC•ER head can be used with other
machine tools. It has a 1/2" x 2" straight
shank arbor that can be secured in a
3-point chuck in shop tools or one of our
magnetic fixtures



sales@electroarc.com

STANDARD FEATURES

OPERATING HEAD	Arc•er head makes and breaks sixty arcs per second. Built-in LED power indicator assists the operator to control feed. Operates in any position including vertically and horizontally.
BASE/CABINET	Heavy, reinforced frame construction 20 $\frac{1}{8}$ " wide x 22" deep x 39 $\frac{1}{4}$ " high (514 x 558 x 997 mm) with push handle, two lift eyes and four heavy-duty ball bearing casters. Guarded control panel, lighted, oil-tight push buttons, low water level indicator light, external fuses and master stop switch.
POWER TRANSFORMER	120, 240, 380, 480, or 550 volt. Disintegrator transformer rating options: 3, 10 or 15 KVA. Up to 10 cutting heat settings, depending on transformer selected. Circuit breaker protection, Machine Tool electrical standards.
COOLANT SYSTEM	7.4 gal. (28 l) coolant tank. Wire mesh cartridge filter intake. Pump 2 GPM, 90 PSI, $\frac{1}{3}$ HP motor, single phase, 120 volt. Power/Coolant Cable (conducts both liquid coolant and electrical current) double stranded, woven copper braid with polyvinyl cover. 7 $\frac{1}{2}$ ft. (2.3 m) length standard.
SHIPPING DATA	Approximate weights: Net 450 lb. (204 kg), Gross domestic 575 lb. (260 kg), Gross export 650 lb. (295 kg). Volume: 23 cu ft (0.65 cu m).
WARRANTY	One year.

Made in USA

OPTIONS

*Choosing A Power Supply

To remove broken taps in one pass:

3 KVA	up to 3/8" (10 mm)
10 KVA	up to 3/4" (19 mm)
15 KVA	up to 1-1/4" (32 mm)



Remote Start/Stop
Part # A3258



Mini Mag 800-lb. magnetic-base fixture for ARC•ER Head

800 lb. (362 kg) permanent magnet holds firmly to all ferrous surfaces. Enables precise manual feed. Six angle/position adjustments with 5" (127 mm) vertical, 4.5" (114 mm) horizontal movement. 4" (101 mm) of downfeed.

Part # A1425

Vacuum-base version Part #A1426

Cable Extensions/options

10 foot (3 m) Power Coolant Cable	Part # 5126-2
7.5-foot (2.3 m) Power Coolant Cable	Part # 5126-1
Union for Power Coolant Cables	Part # 6421
10 foot (3 M) Ground Cable Extension	Part #A5127-10
10 foot (3 M) Head Cord Extension	Part #A5157
Cable Hangers	Part #3094



36" 3000-lb. Magnetic-base fixture for ARC•ER Head

The 3,000-lb. (1360 kg) pull magnetic base securely holds the 36" (914 mm) column support.

Head assembly pivots 360° on the 15" (381 mm) crossarm. Part #A2407

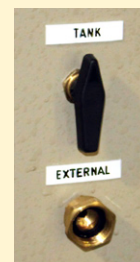


Auto Feed unit

For 36" fixture. Hands free operation. Two-speed variable control.

Dual Coolant Valve

Select external coolant source or from built-in coolant tank. Part # A6448



V0920

ELECTRO ARC MANUFACTURING A STILLION INDUSTRIES COMPANY

USA

Phone: (734) 475-8527
Fax: (734) 475-2902
sales@electroarc.com

www.electroarc.com



UK

Phone +44 (0) 1384 231535
Fax: +44 (0) 1384 252834
sales@electroarc.co.uk