

Ames Portable Rockwell Hardness Testers & Accessories

Ames Hardness Testers

Ames tester model numbers tell you the maximum opening (dimension A) and throat depth (dimension B). The letters tell you the type of tester or specific application. "S" indicates a Superficial tester. "ST" indicates a Superficial tester for Tubing.

Model	Opening(A)	Depth(B)
1	1"	1"
1-S	1"	1"
1-4	1"	4"
1-4S	1"	4"
2	2"	2"
2-S	2"	2"
4-2	4"	2"
4-2S	4"	2"
4-4	4"	4"
8	8"	4"
ST Tube tester (15T scale only)		
16	N/A	N/A



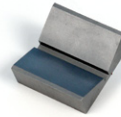
Standard equipment with each tester:

- 1 diamond penetrator
- 1 1/16" ball penetrator
- 1 flat anvil, 1 V anvil (additional anvils for some models)
- Extensions in appropriate sizes
- High-impact carrying case
- 3 test blocks, 2 hard steel, 1 brass.

Superficial testers apply 15, 30, and 45 Kg loads and indicate in the Rockwell N and T scales.

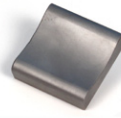
ANVILS

The correct anvil helps you get the reading right the first time.



V ANVIL

- 1/2" #T1128
- 1" #T2228
- 1-1/4" #T4228



CYLINDRICAL

- 1/2" #T1126
- 3/4" #T2226
- 1" #T4226



CONVEX ANVIL

- 1/2" #T1127
- 3/4" #T2227
- 1" #T4227



RAISED FLAT

- 1/8" #T1130
- 1/4" #T1129



FLAT ANVIL

- 1/2" #T1125
- 1" #T4225

Penetrators

- 1/16" Ball #AT1257
- 1/8" Ball #AT1259
- 1/4" Ball #AT1160
- 1/2" Ball #AT1162

Diamond Penetrators

- Standard #T1131
- Superficial #T1178

Extensions

Extensions allow testing thinner items with larger tester models without sacrificing stability.

- 3/4" (3/8" dia.) #T1132
- 1/2" #T2232
- 3/4" #T4232
- 1" #T4234
- 2" #T4235



Special Testers

Model 8

with a big 4 x 8" jaw opening, this tester can handle the big jobs.



Model ST Tubing tester

Uses special cylindrical anvil to test tube wall hardness



Model 16



32" chain clamp allows testing irregular objects

Bench Stand

Cast iron for solid support. Holds tester at convenient angle, freeing hands for ease of use. Internal fiber sleeve protects tester handle.

Weight: 11 lb.
#AT1142



Test Blocks

- Hard Steel (C64) #T1190
- Soft Steel (C33) #T1191
- Brass (B-60-70) #T1192



Ames
Portable Hardness Testers

Made in USA

Serviced worldwide by



Phone: (734) 475-8527

Fax: (734) 761-5426

www.electroarc.com

e-mail: sales@electroarc.com